

The Ashtons logo is displayed in white text on a dark blue rectangular background in the top right corner of the image.A light green rectangular sign with the text "ST. JOHN'S MEWS" in dark grey, serif capital letters. The sign is supported by two vertical posts and is positioned in the foreground on a grassy area. In the background, there is a modern brick building with large windows and balconies, and a well-maintained garden with trees and flowers.

3 St Johns Mews Penleys Grove Street YO31 7AH

£1,695 Per Month

2



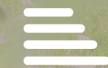
2



1



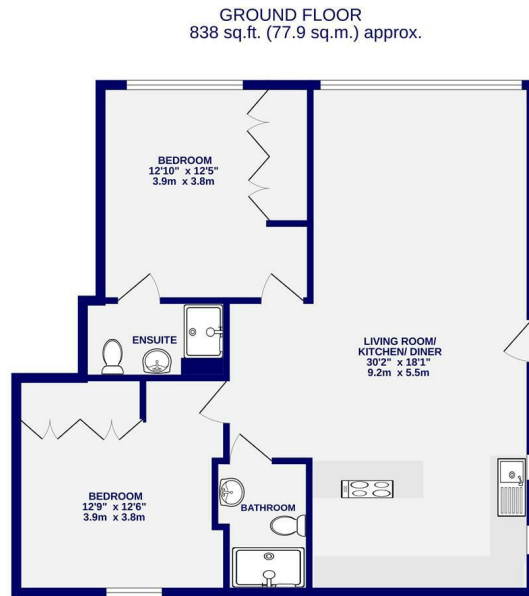
D



This fantastic two bedroom apartment is located within a low rise development in a leafy suburb of York. Within a stones throw of the University gardens and a 10 minute stroll to York Minster and the city centre. The apartment is offered on a furnished basis and briefly comprises; Large open plan living, dining, kitchen with integrated oven, hob, dishwasher, washing machine and fridge freezer. The apartment also provides two double bedrooms with an en suite to the main bedroom and a further shower room and storage cupboard. Externally the property benefits from a private parking space.

Available 5th June

EPC Rating D / Council Tax Band - D / Deposit £1795



TOTAL FLOOR AREA: 838 sq.ft. (77.9 sq.m.) approx.
Whilst every attempt has been made to ensure the accuracy of the floorplan, measurements of rooms and any other items are approximate. It should be noted that the dimensions are taken from the centre of the room and are not necessarily to scale. It is recommended that you visit the property to view the floor plan in person. Illustrations and plans should be used as a guide only and not as a contract. The contents, fixtures and appliances shown have not been tested and are guaranteed as to their operation. Made with Metreplan 02024



Ashtons Lettings



01904 731404



lettings@ashtonsnet.com

